

MULTI-PURPOSE TELESCOPIC LADDER

PMTL-3800



This manual has been produced by Parker Products Ltd and should be kept with the product and referenced for operation, maintenance and troubleshooting purposes.

This manual contains an overall description of the product together with all the necessary information for using the product correctly and safely. It is highly recommended that this manual is read prior to any operation or maintenance of this product. The safety precautions and warnings are to ensure your safety and protect you from harm, or damage to the product. All photographs and drawings in this manual are supplied by Parker Products Ltd to help you with the operation and maintenance of the product. The information contained in this manual was accurate at the time of production,

CONTENTS

Contents 1

Guarantee..... 2

General Safety Instructions 3

Assembly 4

Locking Mechanisms 5

Hinge Operation 6

Hinge Positions 7

GUARANTEE

Parker Products Ltd Guarantees the product against defective material or damage for a period of 12 months from the date of purchase. A proof of purchase must be provided with the product.

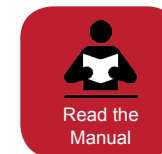
In case of any fault please return the product to Parker Products Ltd or an authorised repair agent.

If any fault is caused by defective materials or quality of build, repair will be carried out free of charge. However, this guarantee does not apply in the case of normal wear and tear, nor any damage caused by misuse, accident or any repair from an unauthorised agency.

NOTE: In order for you to effect this guarantee you must provide proof of purchase in the form of a dated receipt or invoice within a 12 month period of purchase. If repairs are outside of the warranty period a quote will be made accordingly.

Parker Products Limited

GENERAL SAFETY INSTRUCTIONS



- **DANGER! Keep this ladder away from live electrical wires.**
- **Maximum load for this ladder is 150kg.**
- **Always ensure that the locking mechanisms are in the locked position before applying weight.**
- **Inspect the ladder before use. Do not use if parts are found damaged or missing.**
- **Do not attempt to modify the ladder. Doing so may result in serious injury and will invalidate the guarantee.**
- **Always setup the ladder on a surface that is level, stable and dry.**
- **Always ensure both feet are firmly supported before stepping on the ladder.**
- **Never use the ladder as a brace.**
- **Never over reach, stay balanced and keep your body between the rails.**
- **Never allow anyone under the ladder when working.**
- **Always wear shoes that have a good grip, and avoid wearing loose clothing.**
- **For professional users regular inspections are required.**

ASSEMBLY

MOUNTING INSTRUCTIONS FOR THE SUPPORT BAR

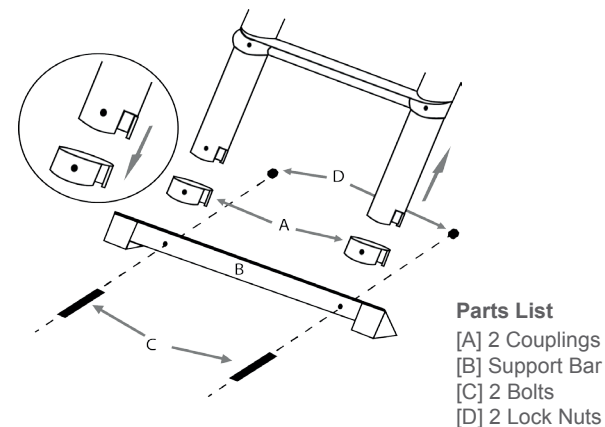
- A. Insert support bar in the round coupling slots.
- B. Insert the round couplings into the ladder ends (ensure the pads face downward).
- C. Insert bolts through rails.
- D. Place lock nuts on bolts and tighten fully.

EXTENDING THE LADDER

- A. For the telescopic step ladder:** Grip the ladder with both hands and pull upwards to extend the ladder for your use. Then pull the release rod to the A frame position and lock the hinge.
- B. For the straight telescopic ladder:** Pull the release rod to the straight position and lock the hinge. Extend the ladder step by step until suitable for your use.
- C. For the stairway telescopic step ladder:** Grip the ladder with both hands and pull upwards to extend the ladder for your use. Then pull the release rod to the A frame position and lock the hinge. Fold one side in the right position for the stairway.

IMPORTANT:

Attach the support bar securely into the rails before using.



STORAGE

This ladder must be stored in a safe dry location away from children and excessive heat.

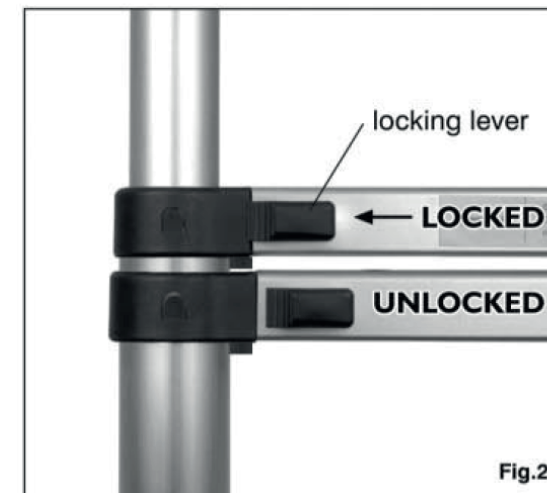
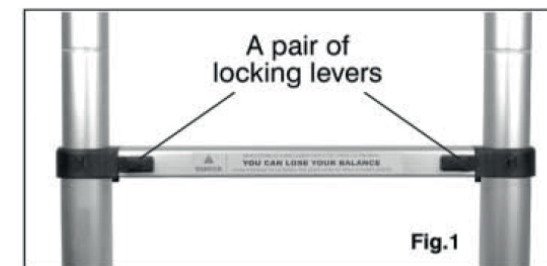
LOCKING MECHANISMS

⚠ IMPORTANT:

Familiarise yourself with how the ladder works before use!

- Each step on the ladder has a pair of locking mechanisms. These consist of spring-loaded steel pins that automatically lock into place as the ladder is extended.
- Each mechanism is connected to a locking lever viable on the outside (see fig.1). The locking levers have two purposes. They indicate whether the mechanism is locked (or not), and they serve as buttons for releasing the pins (lowering the ladder).
- A lever that is close to the side of the rails indicates the mechanism is locked. A lever away from the side rail indicates that it is NOT locked (see Fig.2).

⚠ CAUTION! The locking mechanisms may appear to audibly 'click' shut, but always visually check that the levers are locked. the locking mechanism must be fully secured before use.



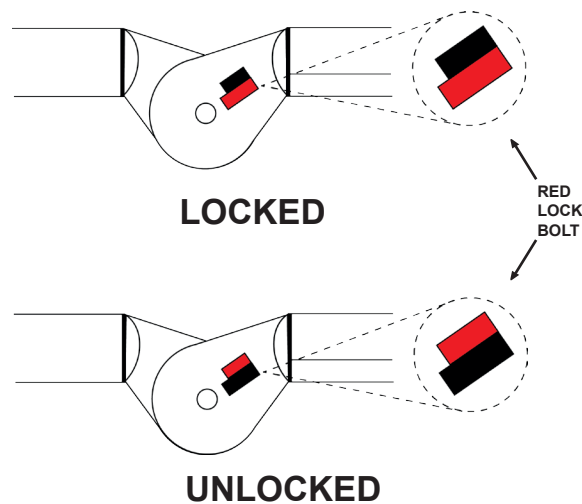
HINGE OPERATION

HINGE POSITIONS

To lock the hinge: Move the ladder to the hinge lock position. Make sure the Lock Bolts lock in place on both hinges. Check the label on both hinges to be certain they are locked.

(If necessary move the ladder section slightly back and forth to ensure locking)

- Be sure all hinges are locked before using the ladder.
- Never use anything other than your hand to lift up the hinge release rod.
- Never use the hinge release rod to adjust, move, or transport the ladder.
- Do not use this ladder if lock bolts do not lock in place.
- Keep hinges clean and free of dirt, paint, snow, etc.
- The hinges in this ladder have been lubricated in the factory. For best operation depending on actual use clean and lubricate hinges periodically with light machine oil.



To unlock the hinge pull from the center of the Hinge Release Rod then let go.

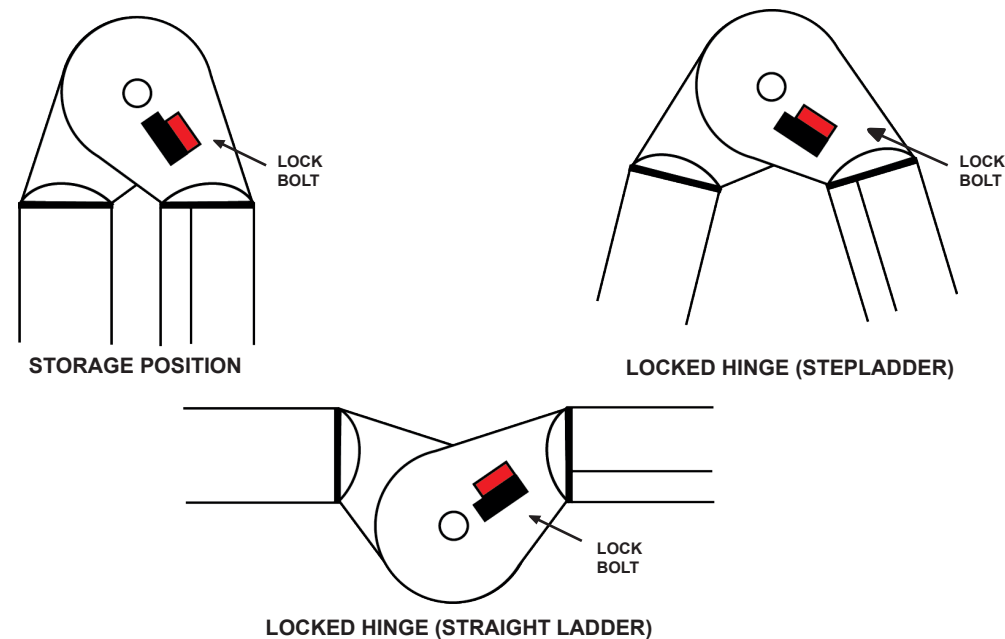
HINGE RELEASE ROD



HINGE POSITIONS

IMPORTANT:

The locking mechanism must be locked before using the ladder.





www.parkerbrand.co.uk